

Lathe machine Mazak Integrex 200 III S

CNC Milling / Turningcenter

Machine type: [Mazak Integrex 200 III S](#)

Control: Mazatrol PC Fusion 640 MT

Year: 2005

Id 13946



Specifications

Turningdiameter: [mm]	660
Max. turning length: [mm]	1.016
Bar capacity: [mm]	65
C-Axis	
Rotational speed: [rpm]	35 - 5.000
Input power: [kW]	22 / 18,5
Travel:	
X-Axis: [mm]	580
Y-Axis: [+/- mm]	80
Z-Axis: [mm]	1.045
W-axes: [mm]	1.050
Rapid motion: (X/Y/Z) [m/min.]	38 / 26 / 38

Subspindle

Rotational speed: [rpm]	35 - 5.000
Input power: [kW]	22 / 18,5
C-Axis	0,001°

Equipment

cooling system	15 bar
High pressure pumps	
Tool breakage detector	
Chip conveyor	
5-axis-simultaneous	
Software:	SUB C-AXIS CONTROL ROTARY AXIS SHAPE COMP. B-AXIS ANGLE POSITIONING TURNING SHAPE COMP. SYNCHRO. MILL TAPPING POLAR COORDINATES INPUT CYLINDRICAL INTERPOLATION

CNC-Spindle tilting for cutting and turning operations

Rotational speed: [rpm] 15 - 12.000

Tool: KM 63

B-Axes -30 / +195°

Toolchanger

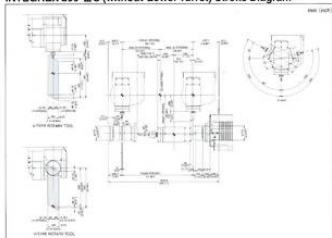
Tool capacity: 40

Machine weight: [kg] 9.700

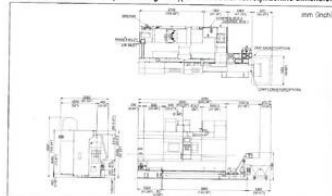
Images



INTEGREX 200-II S (without-Lower Turret) Stroke Diagram



INTEGREX 200-II S(40-tool magazine)(without-Lower Turret)Machine dimensions





CONTACT US Tel: +49 (0) 611 5101990 E-Mail: info@stenzel.de